



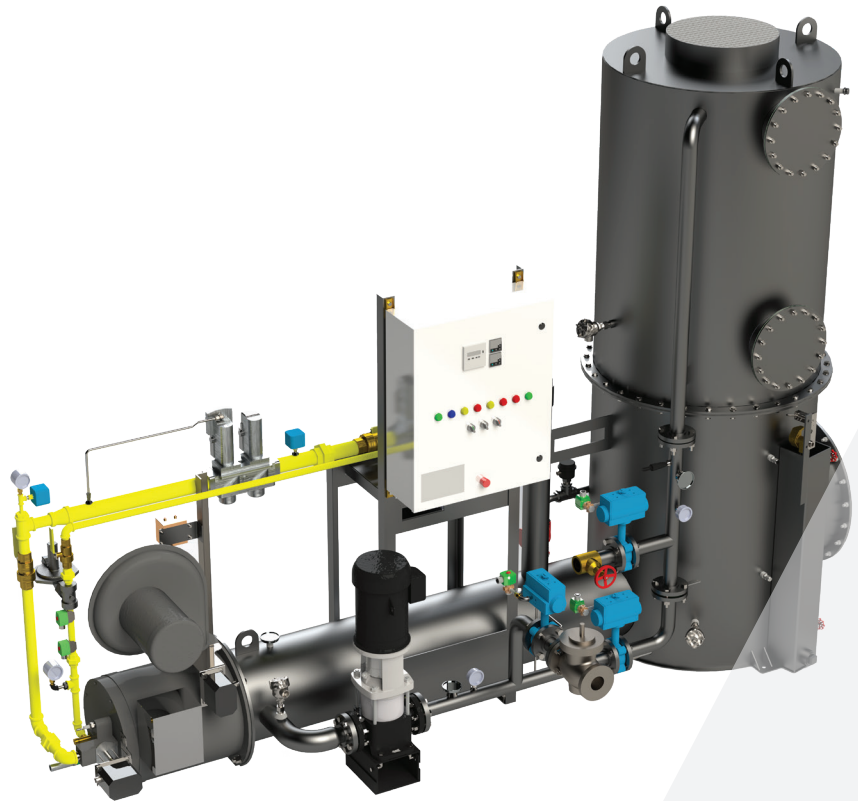
The World's Cleanest, Greenest
Direct-Contact Water Heating System
Now Produces the Hottest Water

QuikWater MegaHeater: Produces Hot Water Up to 200°F

The **QuikWater MegaHeater** is the number one choice for food, beverage, and other process industries that want to operate smarter, cleaner, and more energy efficiently. Mega energy efficiency. Mega hot water. The QuikWater MegaHeater is one serious direct-contact water heating system—engineered to produce hot water up to 200°F. The MegaHeater is ideal for food, beverage, and other process industries that require hot water on demand with no excuses.

- 450,000 BTU/hr. to 8.3 MMBTU/hr. with temperatures up to 200°F
- 98% energy efficient
- Environmentally safe
- Up to 40% energy savings
- 1–2-year ROI compared with boilers or indirect-contact heating systems
- 6 GPM to 207.5 GPM of pure, potable 200°F water
- Dry-fired
- Runs on natural gas or propane
- Linkageless burner controls
- Small footprint
- Easy maintenance with integrated clean-in-place system
- Pre-piped, pre-wired, factory tested, shipped in one piece
- No reassembly required on most models
- Hot water reservoir

The **QuikWater MegaHeater** is the number one choice for food, beverage, and other process industries that want to operate smarter, cleaner, and more energy efficiently.



QuikWater is a brand of OGI
Process Equipment, Inc.

OGIPE.COM

MegaHeater Capacities

Temp Rise	GPM per Heater Model					
	450	850	1800	3300	5100	8300
80	11.3	21.3	45.0	82.5	127.5	207.5
90	10.0	18.9	40.0	73.3	113.3	184.4
100	9.0	17.0	36.0	66.0	102.0	166.0
110	8.2	15.5	32.7	60.0	92.7	150.9
120	7.5	14.2	30.0	55.0	85.0	138.3
130	6.9	13.1	27.7	50.8	78.5	127.7
140	6.4	12.1	25.7	47.1	72.9	118.6
150	6.0	11.3	24.0	44.0	68.0	110.7
160	5.6	10.6	22.5	41.3	63.8	103.8
DIM "A" – Length	88"	107"	122"	151"	215"	260"
DIM "B" – Width	25"	28"	38"	49"	53"	70"
DIM "C" – Height	84"	100"	100"	100"	100"	101"
Exhaust stack diam.	6"	8"	12"	18"	22"	28"

QuikWater[®] MegaHeater can be set for a range of BTU needs.

Heater Calculations:

BTU Required = Temp Rise x GPM x 500

Temp Rise = Hot Water Temp – Cold Water Temp

Heater capacities reduced for elevations above 1000 feet.

Reduction formula for maximum BTU outputs:

$$\text{BTU reduction percentage} = \frac{(\text{Elevation} - 1000)}{1000} \times 4\%$$

There's no better time to put QuikWater direct-contact water heating systems to work in your business. Call us today at 918.246.1600 and learn why we are the Number One brand for hot, clean, green water-heating technology.

